

The NAPCO logo features the letters 'NAPCO' in a bold, blue, sans-serif font. A red downward-pointing triangle is positioned between the 'A' and 'P'.

*thinking **BEYOND** the box*



VULCAN

INFORMATION PACKAGING

Innovation



thinking **BEYOND** the box

www.napcousa.com

NAPCO

Quality

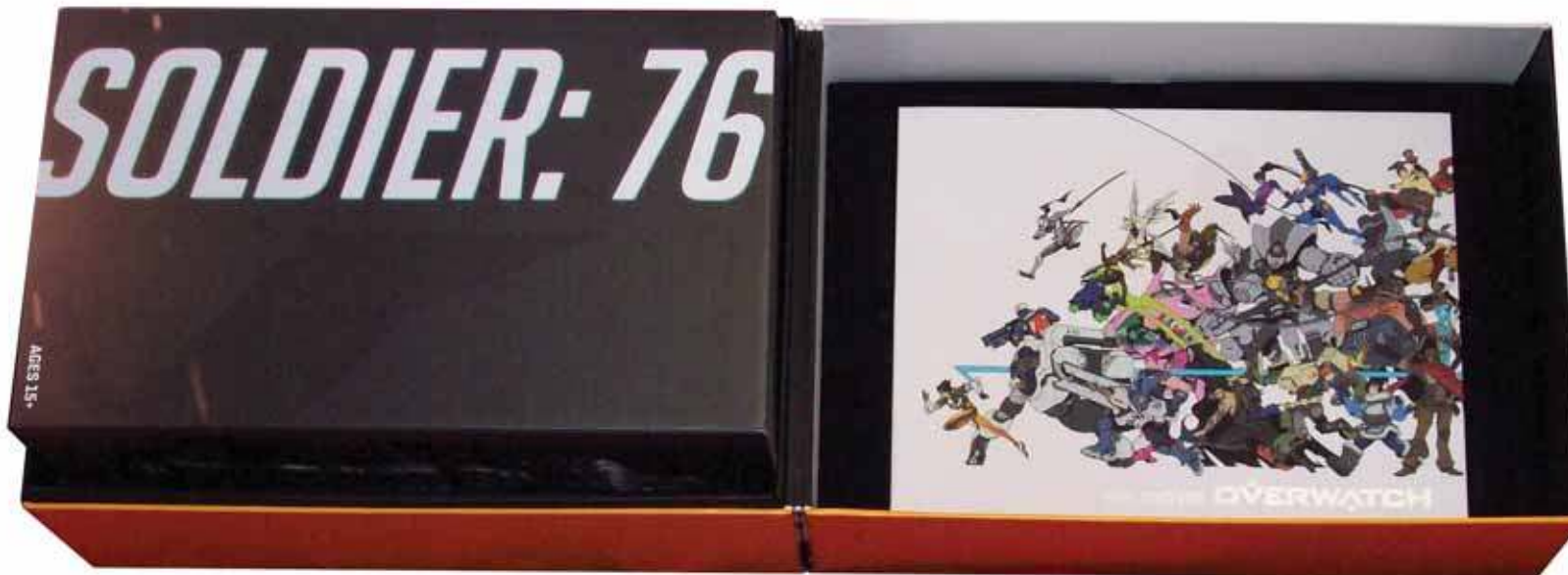


thinking **BEYOND** the box

www.napcousa.com

NAPCO

Unique & Complex Projects



thinking **BEYOND** the box

www.napcousa.com

NAPCO

Speed to Market



thinking **BEYOND** the box

www.napcousa.com

NAPCO

Industries Served

- ▶ Cosmetics
- ▶ Wine & Spirits
- ▶ Entertainment
- ▶ Corporate
- ▶ Collectibles
- ▶ Confectionary
- ▶ Hospitality
- ▶ Publishing
- ▶ Healthcare
- ▶ Toy and Games
- ▶ Software
- ▶ Sample Books

Proudly Made in the USA

Our Process

- ▶ IT'S ONE THING TO MAKE A TWO-PIECE BOX; IT'S ANOTHER TO PRODUCE A COMPLEX STRUCTURE WITH CLOSURES, HANDLES, HINGES, LATCHES AND WINDOWS.

In every component from concept to completion, NAPCO engineers excellence. Our structural engineers design each product with automation in mind. This ensures consistent quality throughout the manufacturing process.

- ▶ WHAT MAKES NAPCO DIFFERENT?

Our team identifies and resolves any problems prior to production so each finished piece is right every time. Our innovation allows reduced time to market with the highest quality. We make it easier, better, and quicker by providing turnkey solutions under one umbrella.

Project Management

Project Specification Submission
Structure sample ideas and quotes within 2-3 business days.

CAD drawings, complete production schedule, and delivery dates supplied with receipt of purchase order.

Final structure approval using approved artwork.

Color proof submitted. Testing of materials and treatments prior to production.

Conversion of materials begins when printing is complete.

Production and shipping schedule updated daily.

Tracking information provided with each shipment.

Capabilities

▶ WHAT MAKES NAPCO DIFFERENT?

Through years of experience NAPCO has developed the processes and capabilities to quickly develop structural solutions and to provide you **production quality samples** for your approval prior to manufacturing. This process assures you will receive **exactly** what you need from concept through completion. Best of all, the samples allow you the opportunity to pre-sell your product or ideas.

▶ Custom Products

- Presentation Binders, Folders & Albums
- Multimedia Packaging for CD, DVD, & Blu-ray
- Game Boards & Boxes
- Point of Purchase Displays & Counter Cards
- Material Sample Books & Boxes
- Promotional & Product Launch Kits
- Slip Cases & Angle Boxes
- Clamshell Storage Boxes
- Puzzles
- Educational & Corporate Training Kits
- Retail Packaging
- Cosmetics Packaging
- Coin Albums
- Specialty Gift Boxes
- Two-Piece Setup Boxes
- Turned Edge Binders

▶ Decorative Finishing Options

- Spot UV Printing
- Textured UV
- Foil Stamping
- Film Lamination
- Embossing
- Debossing/Blind Embossing
- Die Cutting
- Screen Printing
- UV Coating
- Heat Burnishing

▶ Napco Services

- Fulfillment
- Distribution
- Pick 'n Pack
- Handwork
- Shrink Pack
- Pack Out
- Print Solutions
- Digital Printing

▶ Cover Material Options

- Bonded Leathers
- Book Cloths
- Coated and Uncoated Papers
- Film Lamination
- Embossed Papers
- Fabric
- Tyvek
- Foil Paper
- Paper Backed Vinyl
- Coagulated Polyurethane

Specialty Packaging

High Speed Automated Box Manufacturing

- ▶ Flexible manufacturing including single and two-piece boxes and slipcases
- ▶ Capacity up to 180,000 boxes per day
- ▶ Automated wrapping of boxes up to 7 ½" deep



thinking **BEYOND** the box

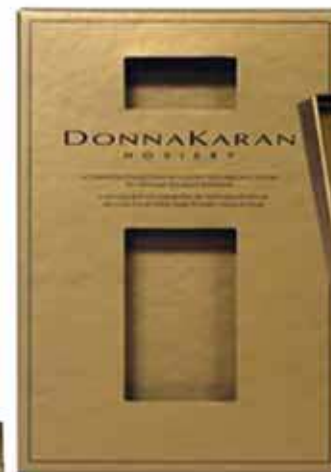
www.napcousa.com

NAPCO

Structures

Interlok Boxes

- ▶ Cost effective clamshell packaging
- ▶ Fully automated on high speed box lines
- ▶ Capacity up to 150,000 boxes per day



Structures

Rigid Set Boxes

- ▶ Popular choice for packaging
- ▶ Cost effective packaging which runs on high speed automated box lines
- ▶ Capacity up to 90,000 set boxes per day



Structures

Hinged Boxes

- ▶ Combination of a turned edge cover with a rigid box tray
- ▶ Enhanced packaging with magnetic, dual lock, or ribbon closure
- ▶ Capacity up to 60,000 boxes per day



Structures

Slipcase / Angle Boxes

- ▶ Ideal alternative to folding cartons and set boxes
- ▶ Finishing with unique die cuts and tip-ons
- ▶ Capacity up to 75,000 two-piece sets per day



Structures

NAPCO Flat Line Box (nflBox)

- ▶ Ships flat reducing shipping costs
- ▶ Minimal storage space required
- ▶ Point-of-Sale gifting opportunities
- ▶ Enhances perceived product and gift value



NAPCO AllSquare Box

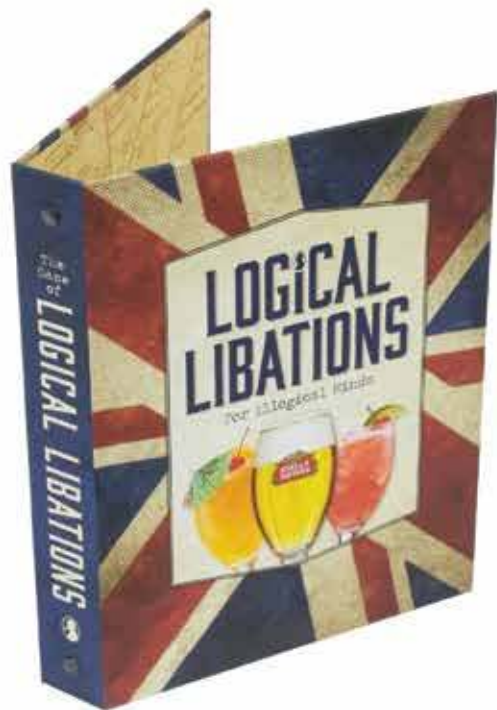
- ▶ Sharp 90 degree corners
- ▶ Elegant look and feel
- ▶ Elevates brand value



Turned Edge Binders

Turned Edge | Casemade Binders

- ▶ Film laminated and other materials
- ▶ 4 color offset and other decorating
- ▶ Choice of spine hinges including
- ▶ Euro Roundback, Flatback or Euro-4



Custom Vinyl Binders

Custom Vinyl Binders

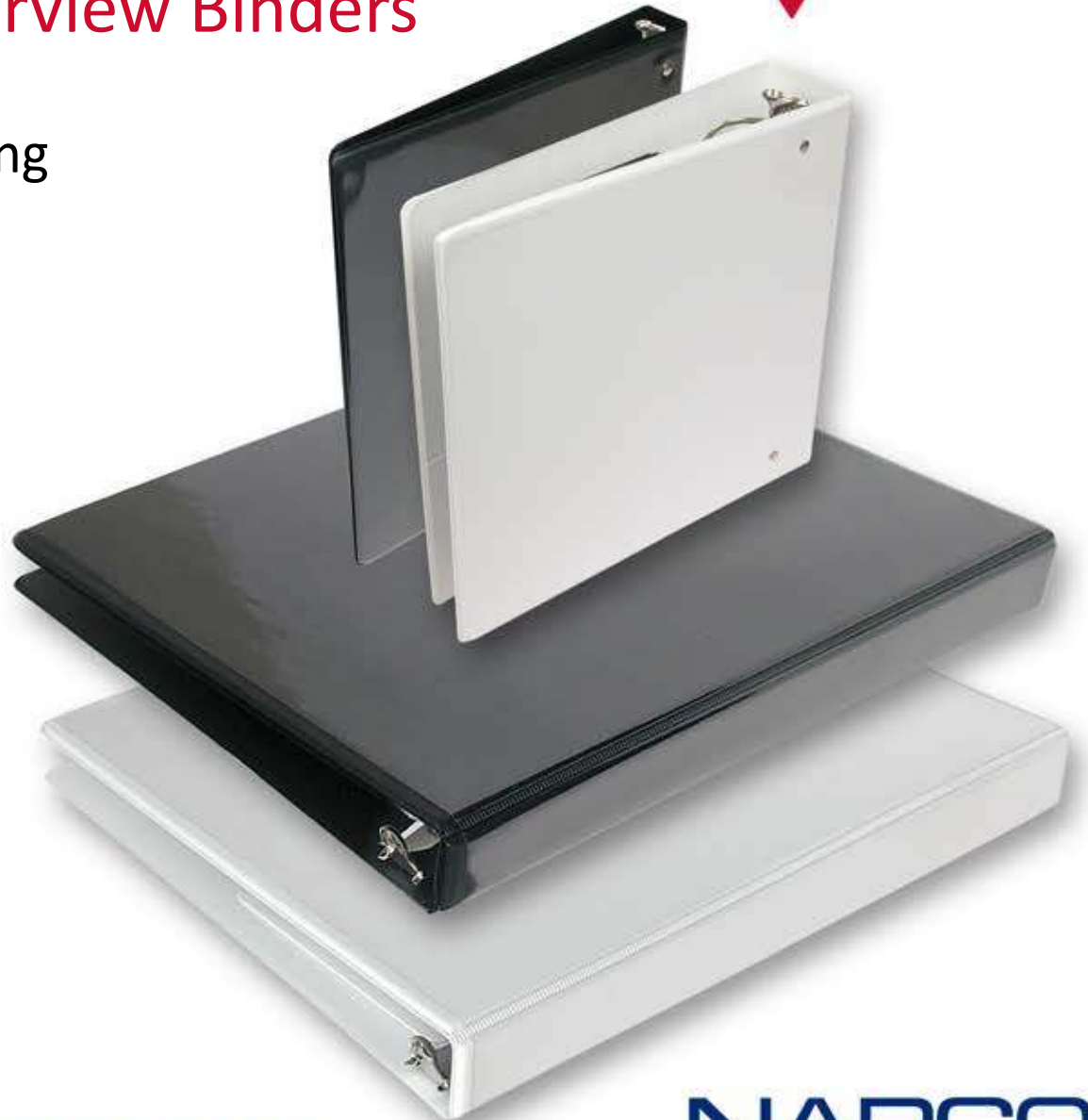
- ▶ In every style imaginable
- ▶ Decorating options include silk screen, offset, foil stamp, deboss, tip-in and more
- ▶ Pictorial entrapments



Clearview Binders

In-stock Ready to ship Clearview Binders

- ▶ PVC-Free PP (polypropylene)
- ▶ Resistant to Cold Crack in shipping
- ▶ Resistant to toner transfer
- ▶ Variety of ring capacity sizes
- ▶ Easy to use Angle D ring metals
- ▶ Manufactured in the USA
- ▶ More durable than PVC binders
- ▶ Glued smooth cover and liner



Case Study

Fleming

► CHALLENGE

The customer sent in a wood box for pricing that had a sliding lid and that would hold two cabernet glasses for their wine club. The price for the unit was over the customer's budget, and they wanted an alternative.

► SOLUTION

Our structural design team designed the unit with a rigid base and created side panels with grooves so that a case-made panel could easily slide in to mimic the look of the wood box. The wood pattern on the sample that was provided was photographed and printed to simulate the wood grain on the package.

► RESULT

By utilizing rigid box, case-making, and internal unitizing technology, we were able to produce the package within budget and in less time. The customer was excited that we met the functional and aesthetic aspects of the piece – it was sturdy, worked smoothly, and showed their product very well.



Case Study

Starcraft

▶ CHALLENGE

Starcraft is an international video game played in teams. The original sample was presented as all rigid construction with five rigid boxes assembled together to make the final package. This required the three internal boxes of the unit to be hand-wrapped due to the depth of one unit and the angles on the other two boxes. This made the package cost prohibitive and would require a lengthy turnaround for the European and the US markets.

▶ SOLUTION

Our design, engineering and production teams collaborated and came up with a re-designed package that automated the process and removed the hand-work from production. We utilized our flat turned edge case making capabilities. The engineering team modified two case-making units and built a turn-in machine that would turn the angles on the internal lid and base unit. The team also engineered a final assembly process that allowed the outside rigid lid and base coming off the automated box lines to be combined with the internal units at a rate of 18,000 units per day.

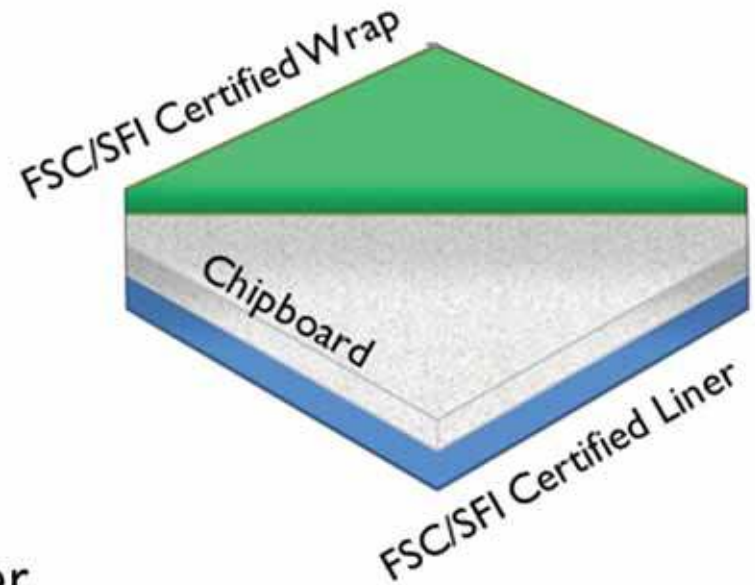
▶ RESULT

The NAPCO solution accomplished two critical needs for the customer; it reduced the price of the unit over 30% and met the critical ship dates to meet their release dates to retail. The Customer was extremely pleased with the unique look where the 'fingers' line up with spacing on every product, and said, "For such a complex project you guys make this look easy!"



Sustainability

- ▶ Forest Stewardship Council (FSC) Certified
- ▶ Sustainable Forestry Initiative (SFI) chain of custody certified
- ▶ Carbon emission neutral paper options
- ▶ Recycled paper options
- ▶ Sony Green Partner Certified
- ▶ All manufacturing is done in the USA
- ▶ Vegetable based inks
- ▶ Chipboard made of 100% fully recycled paper (100% post industrial and post consumer waste)



SUSTAINABLE
FORESTRY
INITIATIVE

Contacts



J. Rockland "Rocky" Proffit, CEO
Paul R. M. Demmink, President
Jerry Pearce, Executive Vice President
Tom Near, VP Sales & Marketing
120 Trojan Avenue
Sparta, NC 28675
Phone: (336) 372-5228
Toll Free: (800) 854-8621